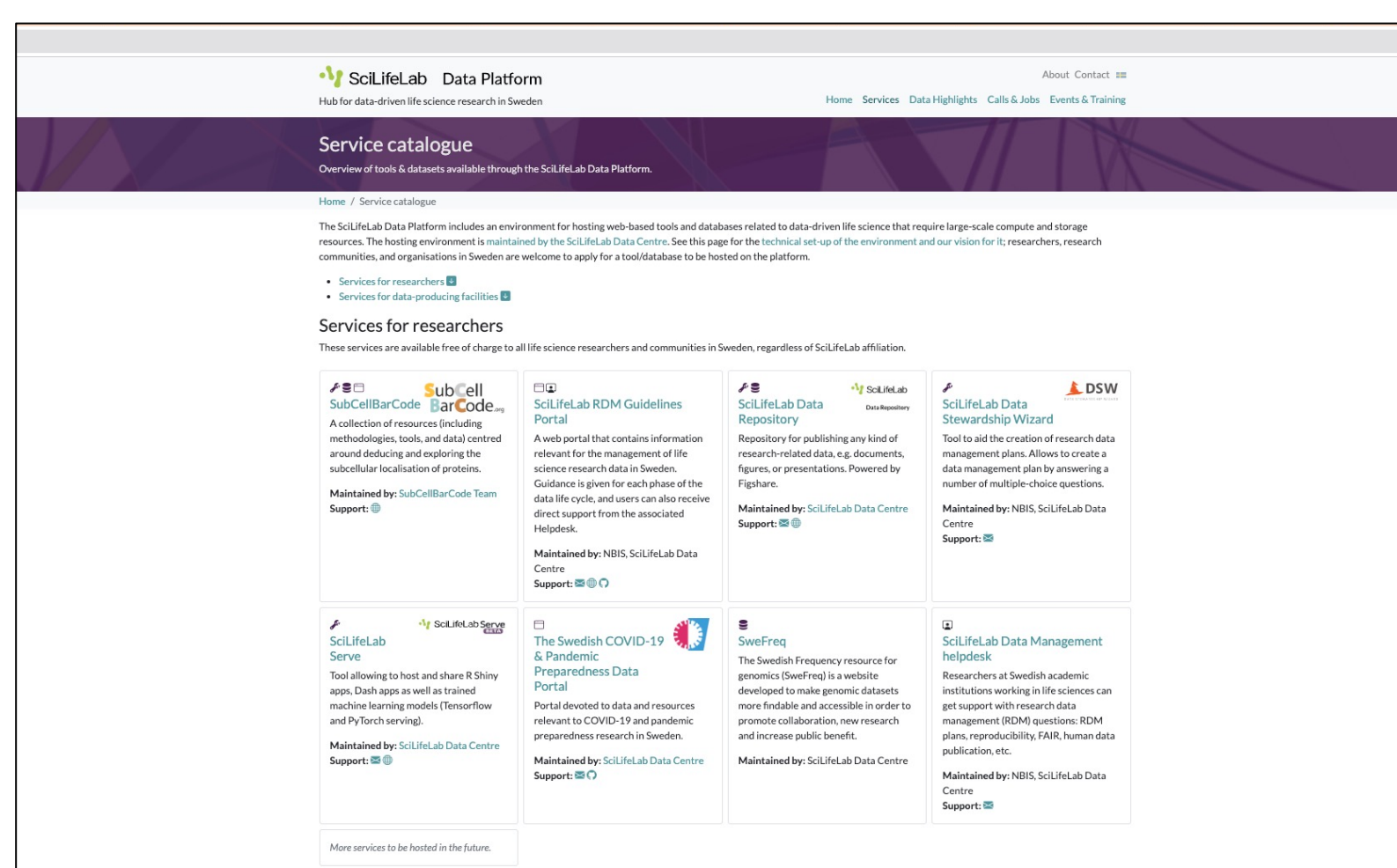


SciLifeLab Data Platform – a hub for data-driven life science research in Sweden



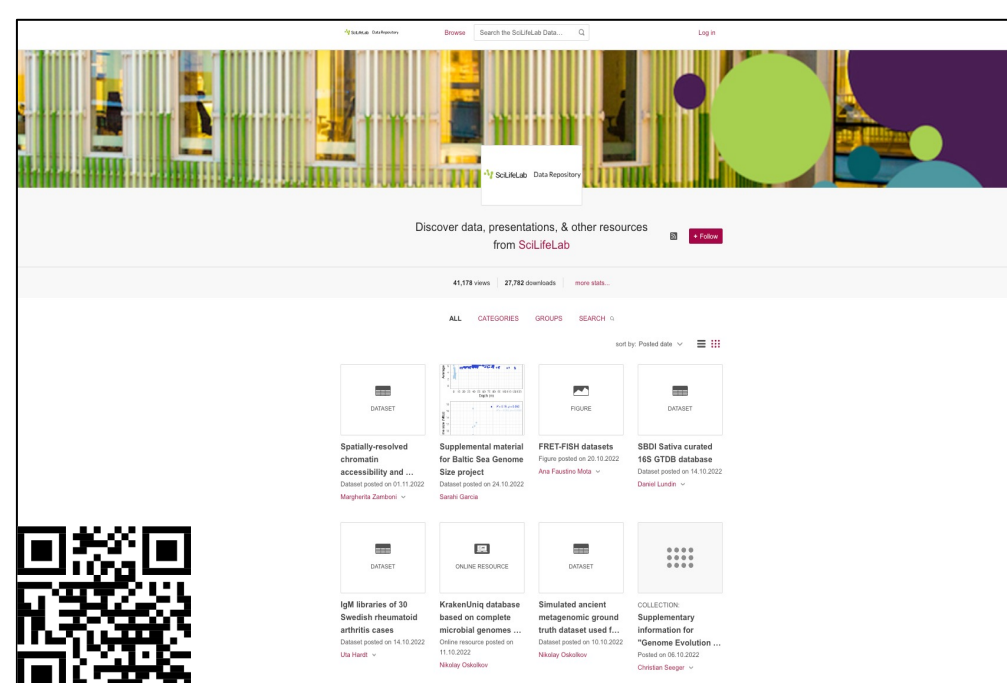
The *SciLifeLab Data Platform* is a technical environment offering data-centric tools and databases as well as an overarching website with the goal to support and accelerate data-driven life science research in Sweden. The services hosted on the Platform are available to all life science researchers in Sweden. The platform is maintained by the SciLifeLab Data Centre. The services hosted on the SciLifeLab Data Platform adhere to the values of open science, transparent research, and FAIR as well as good data management practises throughout the data life cycle.

Services and tools for researchers and data producers

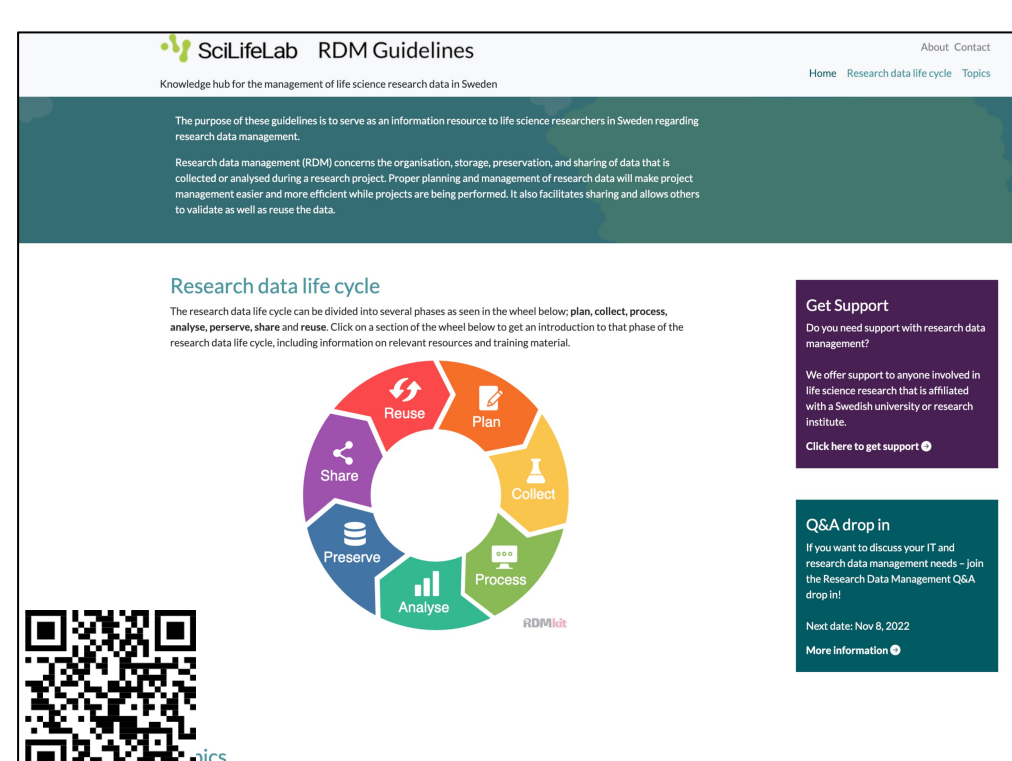


The **SciLifeLab Data Platform** includes an environment for hosting web-based tools and databases related to data-driven life science that require large-scale compute and storage resources. This hosting environment is [maintained by the SciLifeLab Data Centre](#). Researchers, research communities, and organisations in Sweden are welcome to apply for a tool/database to be hosted on the platform.

Here are some of our services:



SciLifeLab Data Repository is an institutional instance of FigShare, a general data repository. The repository also allows for versioning, embargos, and setting up metadata-records-only. Supported by a dedicated team.
<https://figshare.scilifelab.se>

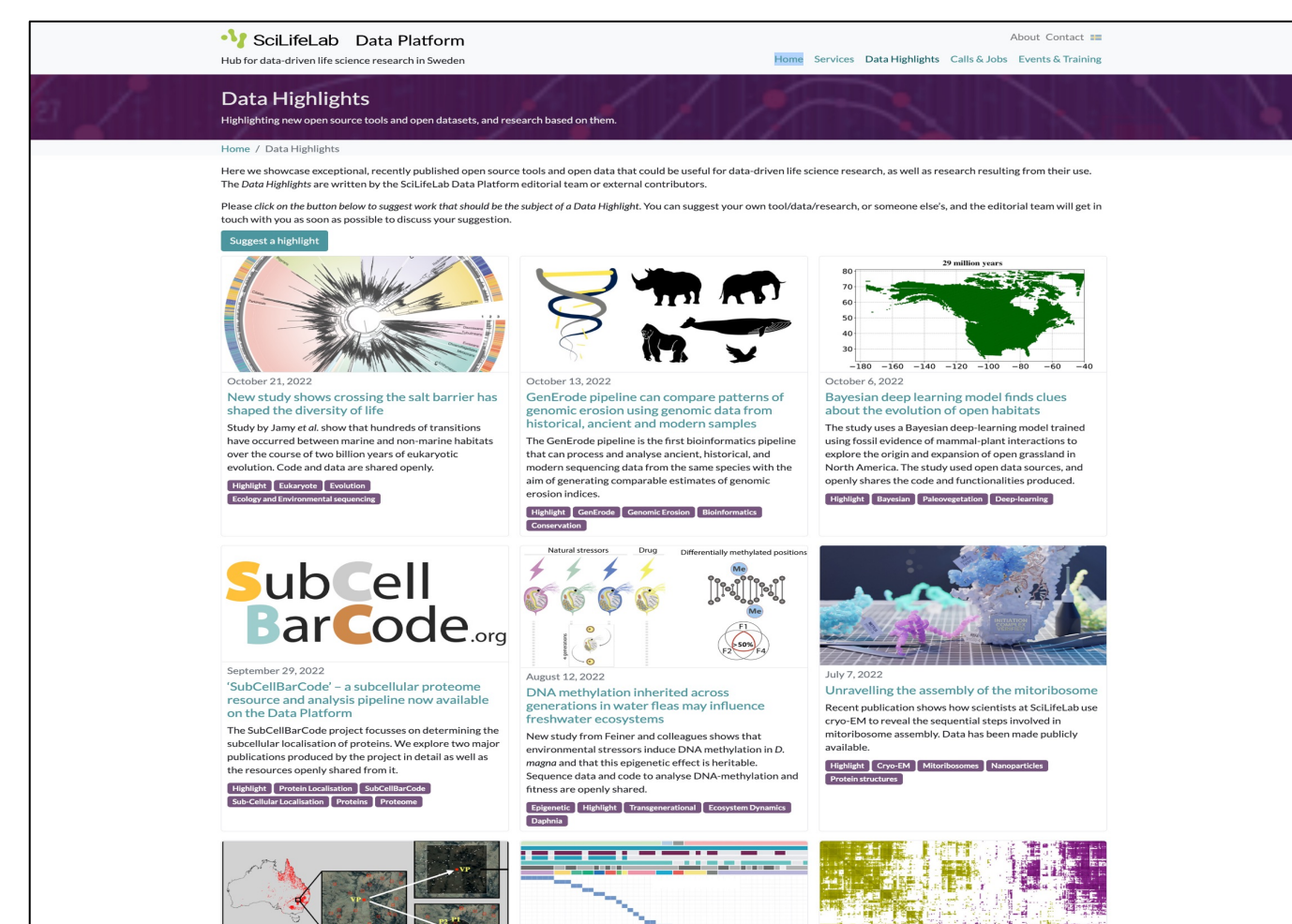


Research Data Management RDM guidelines is a web portal focused on "good practices" for how research data can adhere to FAIR (Findable, Accessible, Interoperable, and Reusable) data practices and maximise the value of data in the data life cycle.
<https://data-guidelines.scilifelab.se/>



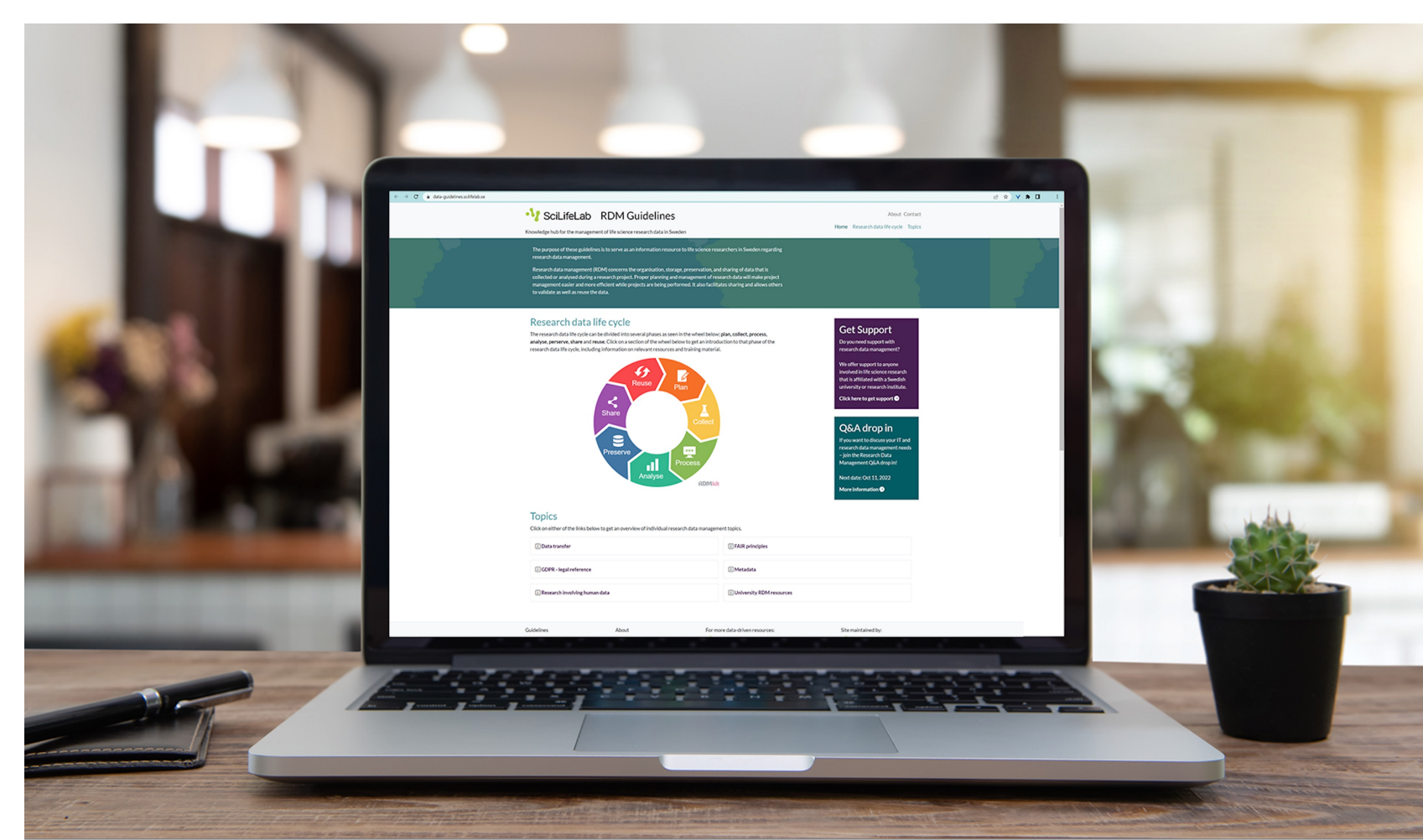
The **Swedish COVID-19 & Pandemic Preparedness Data Portal** is a hub for data, tools, services and resources centered around COVID-19 and pandemic preparedness. Launched 2020, 70 000 + visitors, 200+ visits daily. A "window towards the research community", eg. highlights, dashboards.
<https://pandemicpreparednessportal.se>

Visibility and Community Engagement



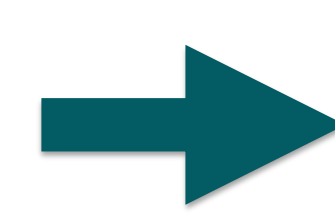
SciLifeLab Data Platform is also a "window towards the data-driven life science community. The **Data Highlights** showcase exceptional, recently published open source tools and open data that could be useful for data-driven life science research. Written by the SciLifeLab Data Platform editorial team or external contributors. Interested in us presenting your work as a **Data Highlight**?

Research Data Management and IT services



SciLifeLab DC offers both Research Data Management and IT support to the infrastructure, and to the PLP and DDLS research programs. Data Centre has developed and maintains a number of services and databases. SciLifeLab Data Centre and NBIS work in close collaboration, providing RDM support to SciLifeLab, for example, for data management plans (DMPs).

Scan to reach our Data Management support



Scan to reach Data Centre general support



@SciLifeLab_DC



Scilifelab-data-centre