

GORC Model Adoption for ELIXIR (Sweden)

*A pitch for strengthening ELIXIR Nodes, Platforms and Communities
using the Global Open Research Commons International Model*

Wolmar Nyberg Åkerström, Data steward / bioinformatician
NBIS – National Bioinformatics Infrastructure Sweden

RDA GORC International Model WG session at RDA P22
22 May 2024



- Inform work on a renewed Data Management strategy at NBIS / ELIXIR Sweden
- Onboard newcomers to a competent but complex ecosystem of research infrastructures at SciLifeLab
- Benchmark and position ELIXIR's rich ecosystem of services and resources

Challenge – not (yet) a “commons”?

Distributed networks of resources from many different organisations used across multiple communities

Future focus?

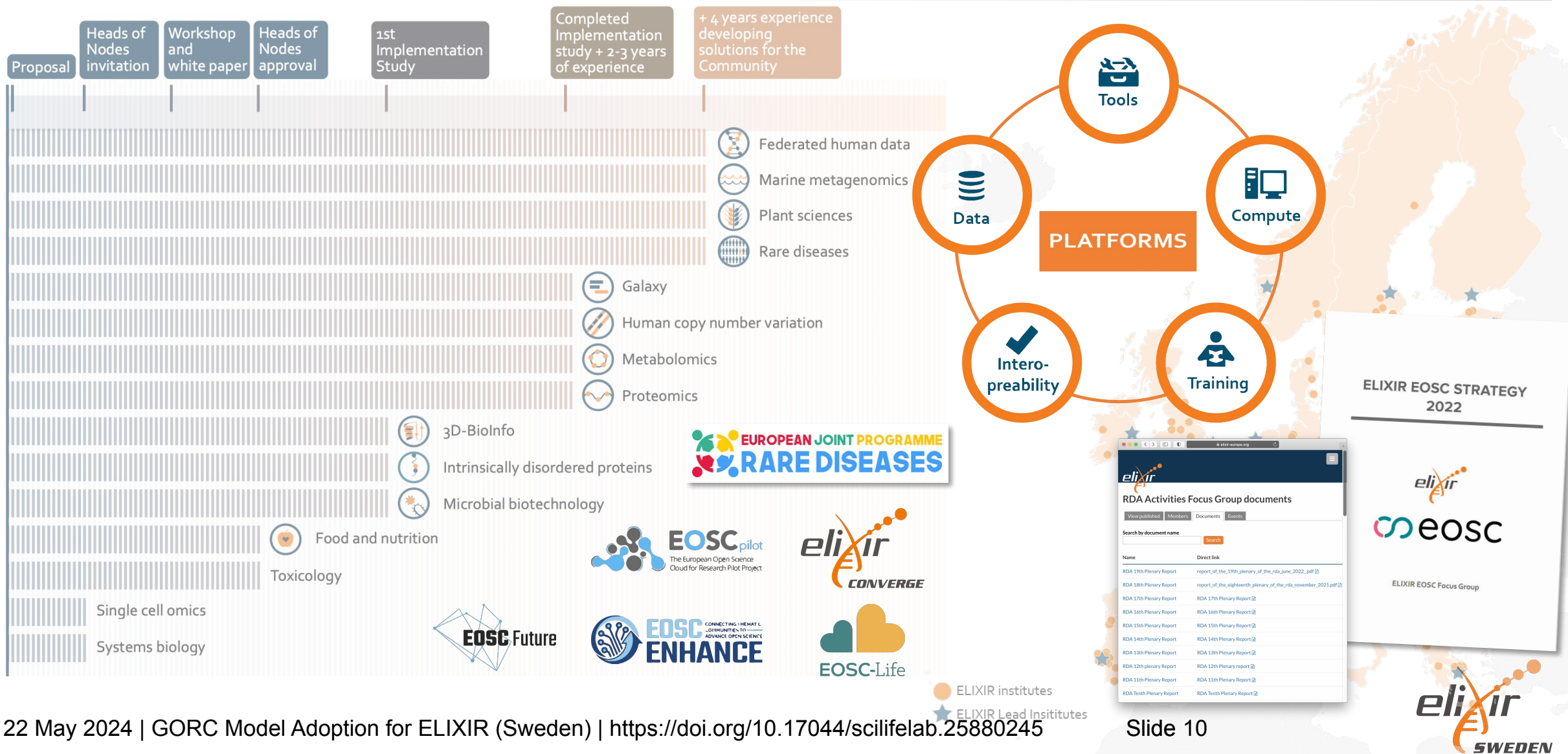
- Built-in support for “profiles” such as localisations or adaptations
- Implement cross-commons value-added resources/services, e.g. discovering solutions, ...



- ELIXIR is a network of 23 national **Nodes** & the **ELIXIR Hub** connecting 250+ research institutes
 - 5 **Platforms**
 - 17 **Communities**
 - 10 **Focus groups**
 - **EU projects & internal projects**
- The Nodes collectively run hundreds of bioinformatics **Services**

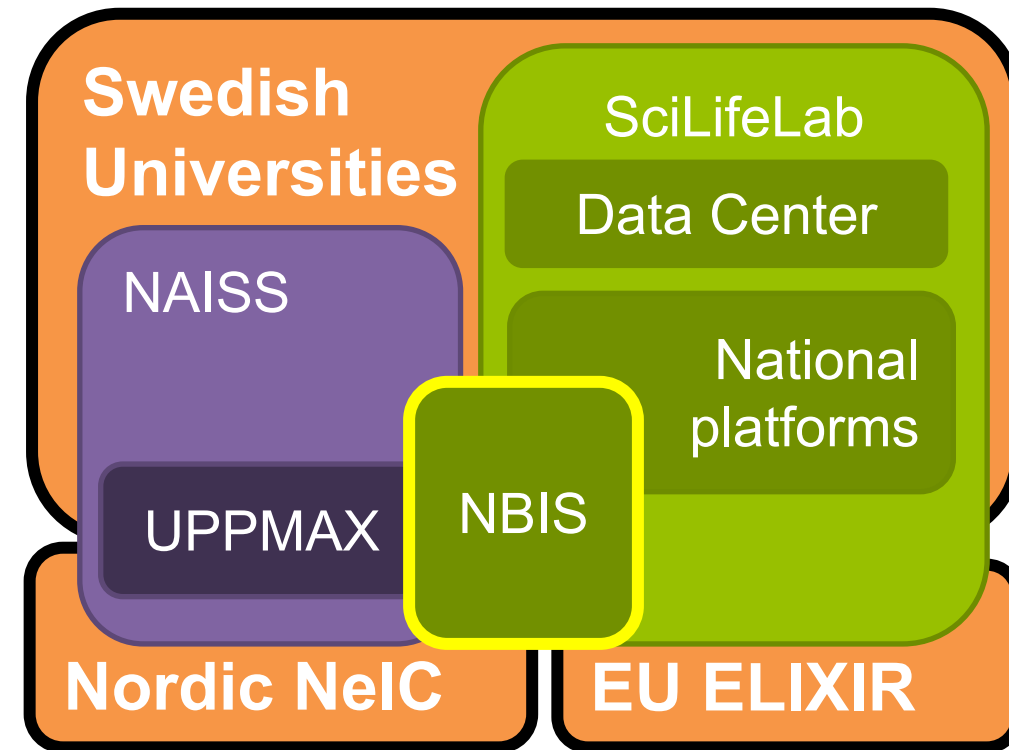


A Europe-wide federated infrastructure





- NBIS - National Bioinformatics Infrastructure Sweden offers Training - Support - Infrastructure
- NBIS is Science for Life Laboratory (SciLifeLab)'s Bioinformatics platform
- NBIS hosts AIDA Data Hub, BioImaging Informatics, FEAGA Sweden...
- NBIS builds European Genomic Data Infrastructure (GDI), EJP-RD





- Inform work on a renewed Data Management strategy at NBIS / ELIXIR Sweden
- Onboard newcomers to a competent but complex ecosystem of research infrastructures at SciLifeLab
- Benchmark and position ELIXIR's rich ecosystem of services and resources

Challenge – not (yet) a “commons”?
Distributed networks of resources from many different organisations used across multiple communities

Future focus?

- Built-in support for “profiles” such as localisations or adaptations
- Implement cross-commons value-added resources/services, e.g. discovering solutions, ...



- Inform work on a renewed Data Management strategy at NBIS / ELIXIR Sweden
- Onboard newcomers to a competent but complex ecosystem of research infrastructures at SciLifeLab
- Benchmark and position ELIXIR's rich ecosystem of services and resources

Challenge – not (yet) a “commons”?

Distributed networks of resources from many different organisations used across multiple communities

Future focus?

- Built-in support for “profiles” such as localisations or adaptations
- Implement cross-commons value-added resources/services, e.g. discovering solutions, ...