

# SciLifeLab Training Hub

Supporting community access to the SciLifeLab infrastructure's knowledge, skills, and expertise



## Roadmap 2023-2028

- Establish Training Platform infrastructure
- Capture SciLifeLab expertise in open and FAIR training collections
- Provide accessible learning in technology and data-driven life science
- Ensure quality training by developing Open Science and Open Education standards
- Maintain sustainable training efforts to foster collaborative research environments

## Our training team



Jessica Lindvall  
Head of Training



Nina Norgren  
Training Manager



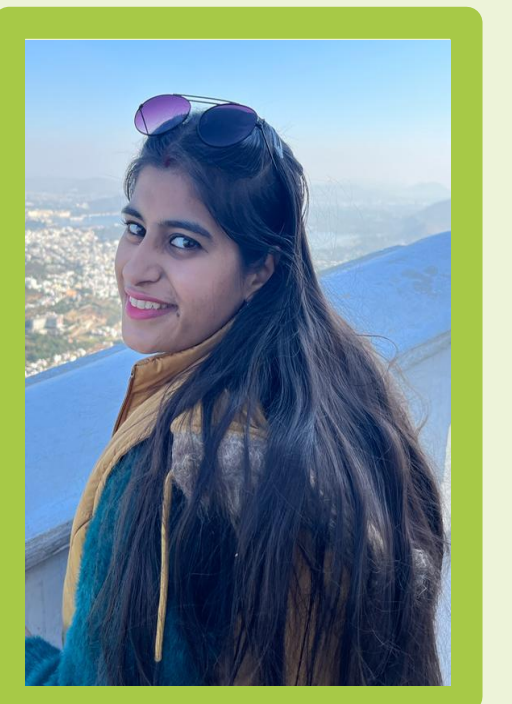
Cat Halthur  
Training Officer



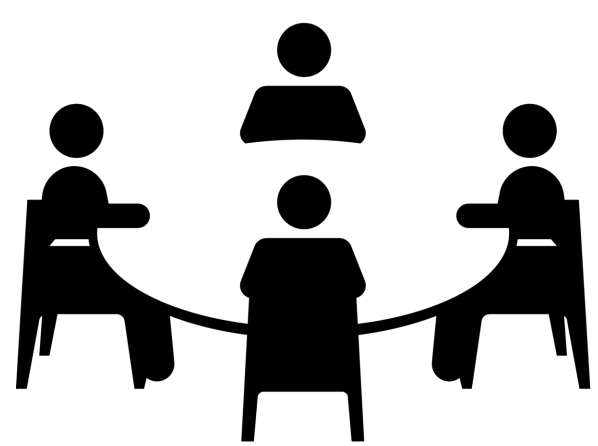
Kristen Schroeder  
Training Officer



Jill Jaworski  
Training Officer

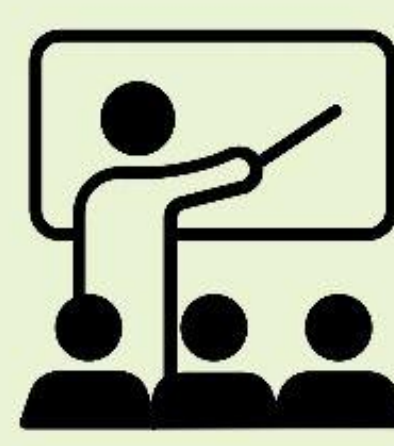


Harshita Gupta  
Sys Dev



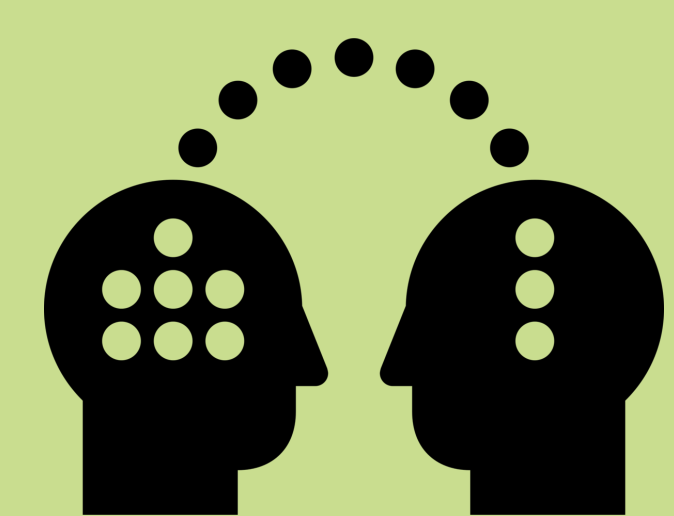
### Training support

- 1-to-1 consulting; course creation, delivery & assessment
- Course development lab



### Training portal

- Training registry
- Training impact measurement
- Github repository
- Learning management system



### Train-the-trainer

- Principles of learning
- Achieve catalytic learning
- Create FAIR materials
- Enable organizational learning
- Enable Open Science

Contact us!



[traininghub@scilifelab.se](mailto:traininghub@scilifelab.se)



We are building at

<https://www.scilifelab.se/training/>