

# COVID-19 and Pandemic Preparedness Data Portal

Liane Hughes

[datacentre@scilifelab.se](mailto:datacentre@scilifelab.se)



# A Hub for Pandemic Data



- Assignment from SRC in 2020
- National portal live June 2020
- Original focus on COVID-19 – shifting to pandemic preparedness

The screenshot shows the homepage of the COVID-19 Data Portal SWEDEN. At the top, there is a navigation bar with links for 'About', 'Contact', and language options 'en' and 'sv'. Below this are buttons for 'Contribute', 'Share data', and 'Get support'. The main header area includes a 'Data' section with links to 'Available datasets', 'Data highlights', 'Dashboards', and 'Sample collection database'. There is also a 'Resources' section with a link to 'Research & Funding'. A 'Topics' section lists 'COVID-19', 'Infectious diseases', and 'Antibiotic resistance'. A large blue banner reads 'Accelerating research through data sharing'. Below the banner, a text box states: 'We are currently working on extending the scope of the Portal to include pandemic preparedness in general. Some sections of the Portal have already transitioned whereas others will transition in the near future.' The 'Available datasets' section lists various categories with counts and arrows: Genomics (35), Proteins (13), Imaging (5), Biochemistry (62), Health (97), Drug discovery (11), Serology (7), Public Health (44), Environment, and Other data (15). There is also a link for 'Recent statistics on COVID-19 in Sweden'. The 'Data highlights' section features a grid of microscopy images, a heatmap, and a 3D protein structure. A pink sidebar on the right contains the text 'Share new COVID-19 data', 'The portal team is happy to assist you with submitting your data to open repositories or answer any questions about data management.', and a 'Support request' button.

**COVID-19 Data Portal SWEDEN**

About Contact en sv

Contribute Share data Get support

Data  
Available datasets Data highlights Dashboards Sample collection database

Resources  
Research & Funding

Topics: COVID-19 Infectious diseases Antibiotic resistance

## Accelerating research through data sharing

We are currently working on extending the scope of the Portal to include pandemic preparedness in general. Some sections of the Portal have already transitioned whereas others will transition in the near future.

### Available datasets

Data available from research groups in Sweden. See available data for all data types

Genomics (35) Proteins (13) Imaging (5)  
Biochemistry (62) Health (97) Drug discovery (11)  
Serology (7) Public Health (44) Environment  
Other data (15)

Recent statistics on COVID-19 in Sweden

### Data highlights

Highlights of recent openly shared data and data re-use. See all highlights

Share new COVID-19 data

The portal team is happy to assist you with submitting your data to open repositories or answer any questions about data management.

Support request



# FAIRness and Open Sharing



- Data and code sharing
  - **Encourage**
  - **Guide**
  - **Support**
  - **Promote**

## Share data

[Home](#) / [Share data](#)

Publish your COVID-19 research data to make it available for the rest of the world together with descriptive metadata. For many biological datatypes, there are

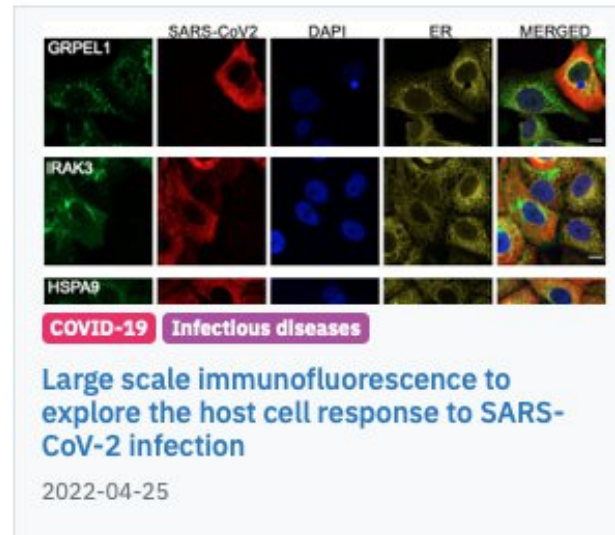




# FAIRness and Open Sharing



- Data and code sharing
  - Encourage
  - Guide
  - Support
  - **Promote**



SciLifeLab\_DataCentre  
@SciLifeLab\_DC

Check out the latest [#OpenData](#) item published in the [@SciLifeLab](#) Data Repository!  
[scilifelab.figshare.com/articles/datas...](https://scilifelab.figshare.com/articles/datas...)  
[#OpenScience](#)

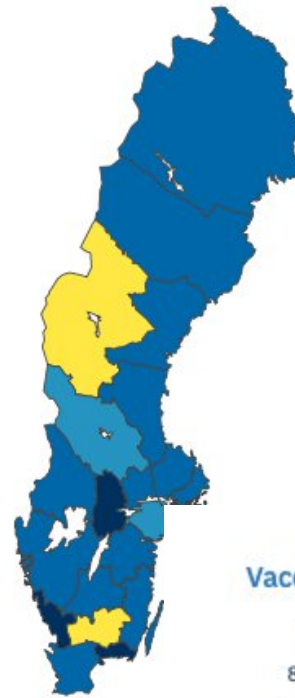
10:27 AM · Apr 21, 2022 · Twitter Web App



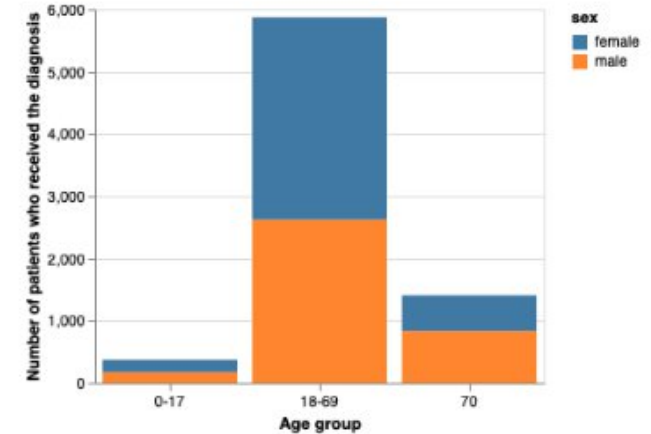
# Partner Projects & Dashboards



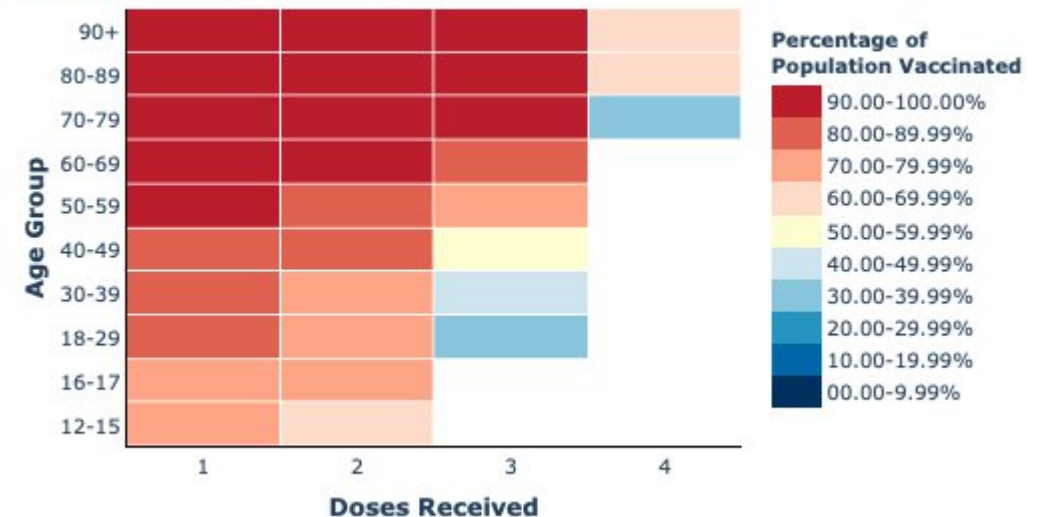
- Present partner projects.
- Create dashboards:
  - Share data from research groups.
  - Share from open data sources.



Diagnosis U09.9



Vaccine administration in Sweden →

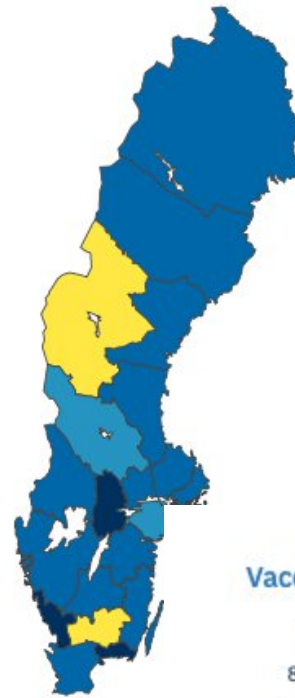




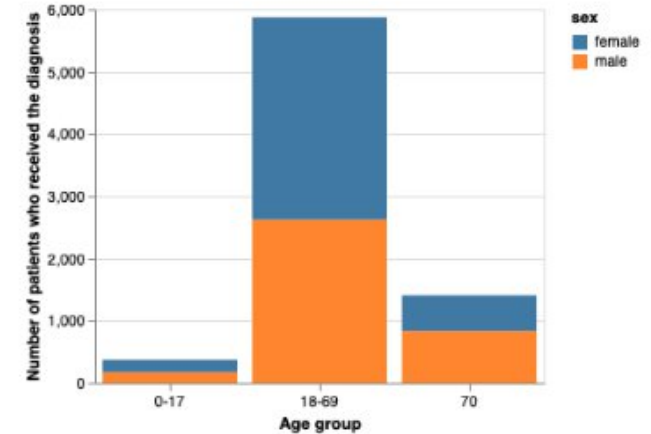
# Partner Projects & Dashboards



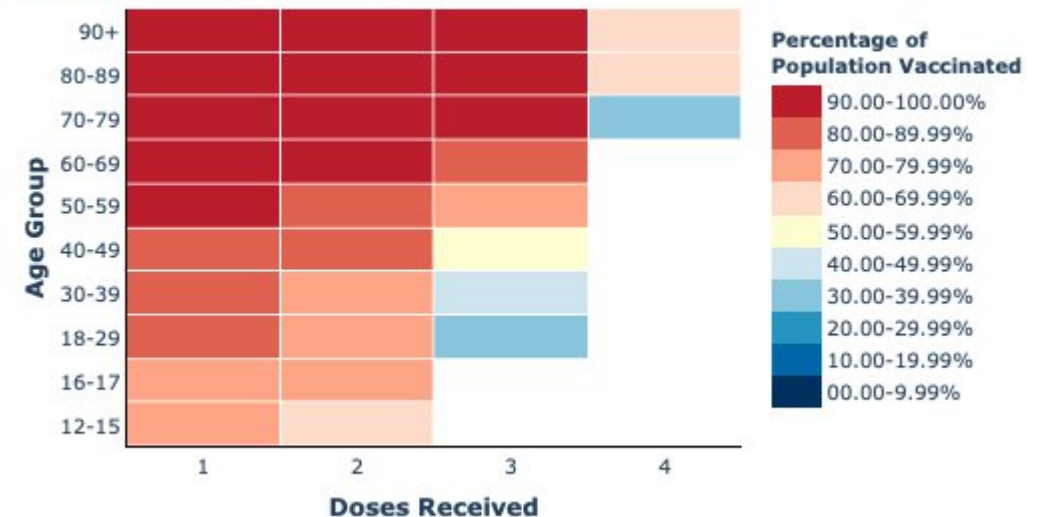
- Constantly expanding and reaching out.
  - Encourage groups to reach out.
  - Contact groups sharing data.
- Resources pages for PLP projects in future



Diagnosis U09.9



Vaccine administration in Sweden →





# Other Resources



- Make links to other resources.
- Work with biobanks closely.
- Collated publications, especially those with available data.

## Sample Collection Database

Registry of Swedish biobanks and sample collections for COVID-19 research. [About](#)

Biobanks: 18

Collections: 35

[Search in the database](#) →



## All data types

[Home](#) / [Available datasets](#) / [All data types](#)

## Published Data

### Data available from research groups in Sweden

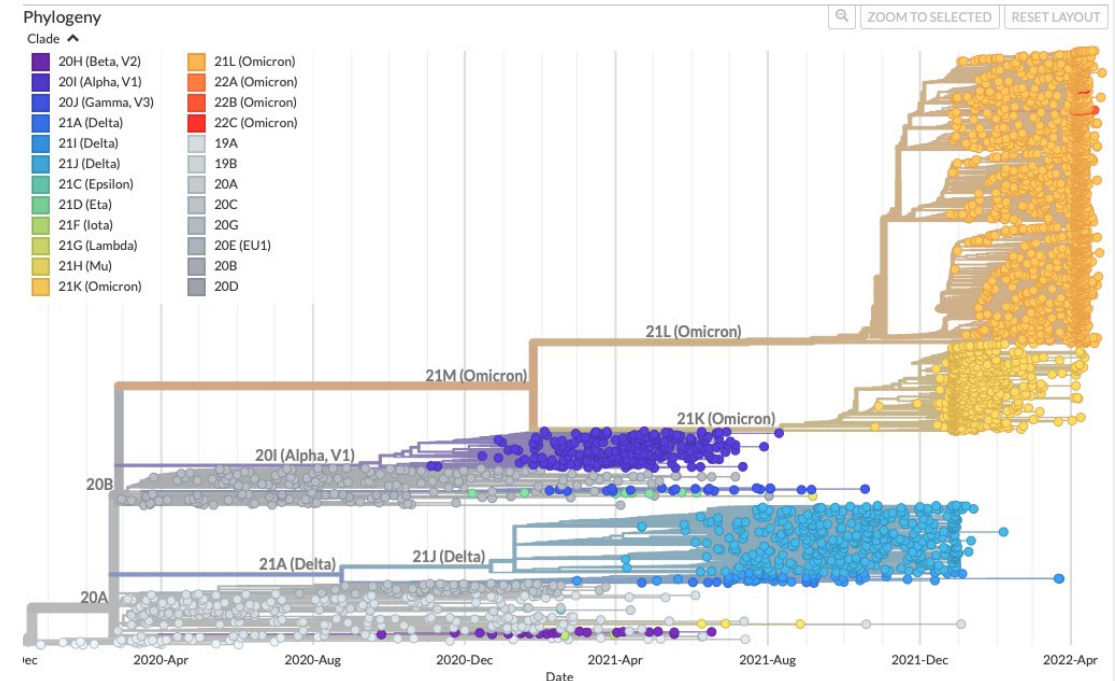
The list below is curated manually and as such may not be exhaustive. dataset, [please get in touch with us](#). Projects sharing data where at lea



# What about Omics?



- Support for submission of omics data
- Promote use and understanding of omics resources.
- Expand in future.





# Future and Best Practice

---



- Moving into pandemic preparedness mode.
- Open sharing of code and data, and promotion of resources.
- Sharing in an accessible way
- Active engagement with the research community



# The 'Thank Yous' to..



Portal team members past & present



**Arnold Kochari**  
Project leader



**Katarina Öjefors  
Stark**  
Data steward



**Liane Hughes**  
Data engineer



**Senthilkumar  
Panneerselvam**  
Systems developer



**Hanna Kultima**  
Data management  
team leader at  
SciLifeLab



**Johan Rung**  
Head of the  
SciLifeLab Data  
Centre

All the scientists, projects, and partners that we work with

Funders:



Swedish  
Research  
Council



**SciLifeLab**



# Want to Learn More/Stay in Touch?

---



Visit us: <https://www.covid19dataportal.se>

Social media:  @scilifelab\_DC



scilifelab-data-centre

Contact form: <https://www.covid19dataportal.se/contact/>